



Child Sexual Abuse and Exploitation Guidance

1. Introduction	2
2. Understanding CSA&E	6
3. Other Routes in CSA&E	7
4. Trafficking and CSE	7
5. Key Principles of Working Together	8
6. Understanding worrying sexual behaviour	9
7. Assessing Risk	10
8. Information Sharing	21
9. Flagging a Concern with the Local Area Team (LAT)	23
10. Frequently Asked Question	24
11. Useful Numbers, Websites, Resources	25
APPENDIX ONE: NORTH YORKSHIRE POLICE INFORMATION SHARING FORM	27
Glossary of Terms	30

1. Introduction

1.1 This guidance has been written in line with *Working Together* (2015) and [Child Sexual Exploitation: Definition and Guide for Practitioners \(DfE, 2017\)](#)¹

1.2 This guidance should be used alongside the following CYCSB procedures:

- [CYSCB Interagency Safeguarding Procedure](#)
- [CYSCB Interagency Procedure for responding to Organised and Complex Abuse](#)
- [CYSCB Interagency Procedure for responding to Allegations against Professionals, Carers or Volunteers](#)
- [CYSCB Interagency Protocol for Runaway Missing from Home or Care](#)
- [CYSCB Interagency Procedure for responding to Children who Sexually Harm](#)

1.3 Scope

1.4 This guidance is for all professionals who work with children and young people.

1.5 Legislation and Standards

- Child Sexual Exploitation: definition and guide for practitioners (DFE, 2017)²
- Safeguarding Children who may have been Trafficked (DFE 2011)³
- Working Together to Safeguard Children (2015)⁴
- Office of the Children Commissioner Report Gangs and Group CSE “If only someone had listened” (2013)⁵
- Children and Young Person’s Missing from Home, Education or Care (2014)⁶

¹<https://www.gov.uk/government/publications/child-sexual-exploitation-definition-and-guide-for-practitioners>

² Ditto

³ <https://www.gov.uk/government/publications/safeguarding-children-who-may-have-been-trafficked-practice-guidance>

⁴ <https://www.gov.uk/government/publications/working-together-to-safeguard-children--2>

⁵ <http://www.childrenscommissioner.gov.uk/publications/if-only-someone-had-listened-inquiry-child-sexual-exploitation-gangs-and-groups>

⁶ <https://www.gov.uk/government/publications/children-who-run-away-or-go-missing-from-home-or-care>

- Children and Families Act (2014)⁷

1.6 Definition of Child Sexual Abuse (CSA)

1.7 *'Sexual abuse involves forcing or enticing a child or young person to take part in sexual activities, not necessarily involving a high level of violence, whether or not the child is aware of what is happening. The activities may involve physical contact, including assault by penetration (for example, rape or oral sex) or non penetrative acts such as masturbation, kissing, rubbing and touching outside of clothing. They may also include non-contact activities, such as involving children in looking at, or in the production of, sexual images, watching sexual activities, encouraging children to behave in sexually inappropriate ways, or grooming a child in preparation for abuse (including via the internet). Sexual abuse is not solely perpetrated by adult males. Women can also commit acts of sexual abuse, as can other children.'* (Working Together to Safeguard Children 2015.)

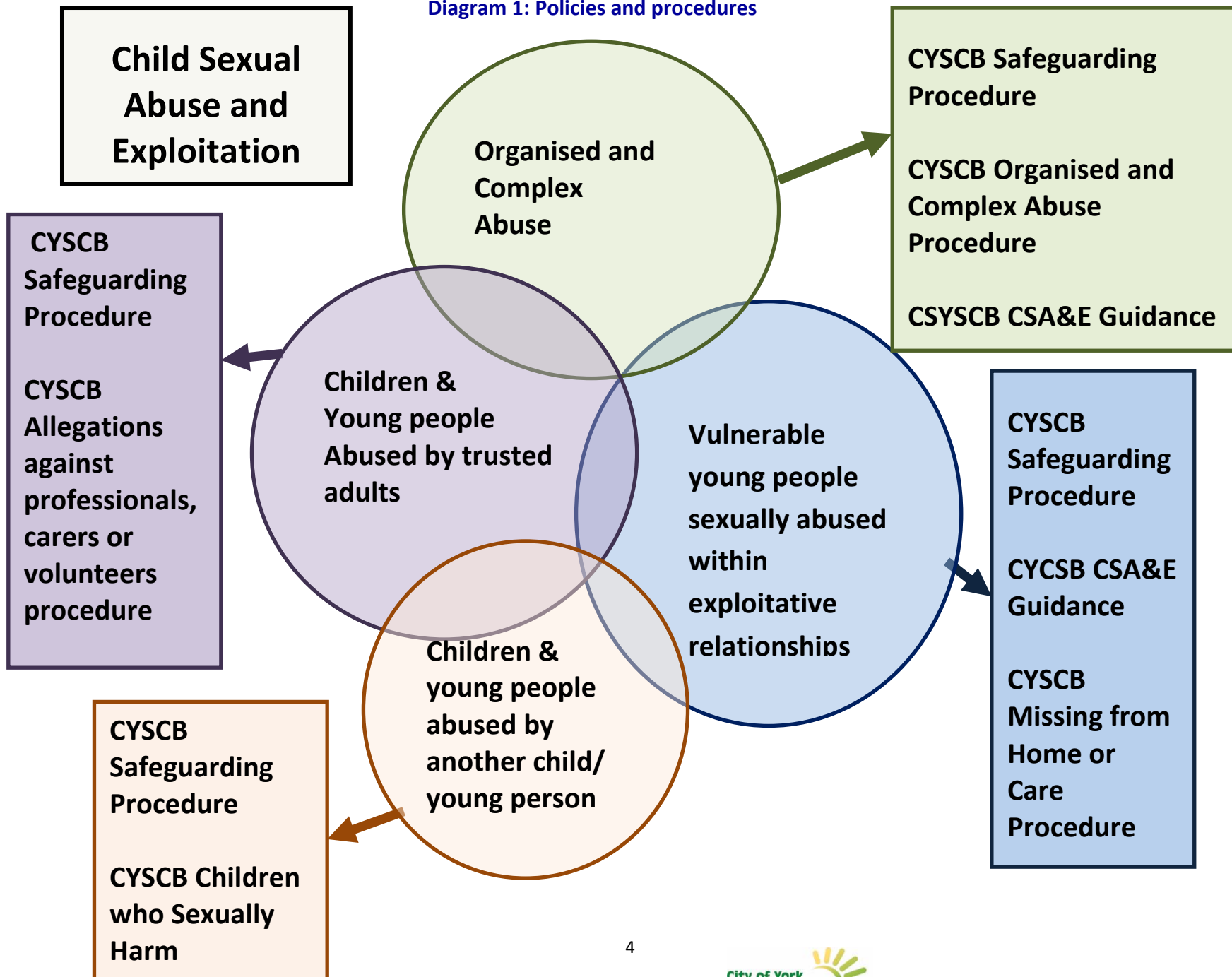
1.8 However CSA can take many forms including:

- Abuse by trusted adults (inter and extra familial)
- Organised and Complex Abuse
- Abuse within exploitative personal relationships
- Abuse by another child / young person

1.9 The response to all CSA is primarily a safeguarding one. However the differing nature of the abuse can require differing responses. The various policies and procedures to be considered are represented diagram 1.

⁷ <http://www.legislation.gov.uk/ukpga/2014/6/contents/enacted>

Diagram 1: Policies and procedures



1.10 Definition of Child Sexual Exploitation (a form of CSA)

1.11 *'Child sexual exploitation is a form of child sexual abuse ... occurs where an individual or group takes advantage of an imbalance of power to coerce, manipulate or deceive a child or young person under the age of 18 into sexual activity (a) in exchange for something the victim needs or wants, and/or (b) for the financial advantage or increased status of the perpetrator or facilitator. The victim may have been sexually exploited even if the sexual activity appears consensual. Child sexual exploitation does not always involve physical contact; it can also occur through the use of technology'* (DFE Child Sexual Exploitation definition and guidance for practitioners 2017). Definition of Child and Young Person

1.12 *The Children Act 1989 defines a child as anyone under the age of 18.*

1.13 *The National Institute for Health and Clinical Excellence (NICE) uses the following terms to describe children of different ages:*

- *Child (under 13 years);*
- *Young person (13-17 years).*

1.14 However there are groups who could additionally be vulnerable such as: children in the care of the local authority; those transitioning out of care or who have left care, and children who may have special educational needs and disabilities.

1.15 The 4 P's

1.16 The City of York Safeguarding Children's Partnership (CYSCP) promotes a multi-agency approach to CSA&E which emphasises the need to **work together** to:

- **Prepare** by provide strong leadership, effective systems, gathering of intelligence and partnership working to tackle CSA&E by recognising the problems of the sexual abuse and exploitation of children and young people;
- **Prevent** by raising awareness of CSA&E amongst young people, parents, carers and communities and to work together to provide children and young people with strategies to recognise, avoid, report and/exit sexual exploitation at any stage and to remove opportunities for potential perpetrators across the County;
- **Protect** by safeguarding and promoting the welfare of children and young people, supporting professionals, parents, carers, families and communities who may be at

risk of CSA&E, identifying potential victims, risks, patterns and perpetrators at the earliest opportunity and to

- **Pursue** by investigating, disrupting, arresting and prosecuting those who seek to coerce, sexually exploit and abuse children and young people whilst supporting victims and their families effectively through the criminal justice system.

1.17 Where a child is at risk of Significant Harm (s.47) or is a Child in Need (s.17) the practitioner should discuss the concerns with their designated child protection officer and determine if the thresholds are met for an immediate referral into Children’s Social Care.

***Are you reporting events where a person, child or young person is at immediate risk of harm?
Consider requesting immediate police response by calling 999 or call 101 to obtain police assistance or advice if not an emergency, or if you feel a crime is being or has been committed.***

2 Understanding CSA&E

2.1 The Grooming Process

2.2 Children and young people who are sexually abused and exploited are often groomed by the perpetrator. This may start with showing the child or young person a lot of interest, affection and making the child or young person feel special. They may do this through offering the child or young person drugs and/or alcohol, and a place to hang out away from safe parents/carers. They may also buy presents such as clothes, mobile phones or give them money. This grooming can take place either inside or outside of the family network.

2.3 Children and young people will not recognise that they are being groomed for abuse.

2.4 Once the perpetrator has gained the child or young person’s trust and affection they may change: becoming threatening and violent towards the child or young person, and may demand sexual favours for themselves, and others, in return for all the things they have previously given them for free.

2.5 Perpetrators can use sophisticated methods to draw children and young people into sexual relationships. Most perpetrators are men but women do sexually abuse.

2.6 The vast majority of sexual abuse takes place within the immediate or wider family setting. However, perpetrators will also target areas where children and young people

congregate such as parks, shopping centres, school entrances and bus stations. Other known methods are through the use of internet sites. The process of grooming may also take place in some adult venues such as pubs and clubs.

3. Other Routes in CSA&E

- 3.1 In addition to grooming, children and young people may be become **sexually abused and exploited** by becoming involved in activities that incorporate the exchange of sex for rewards such as drugs, alcohol, money and accommodation.
- 3.2 Sometimes perpetrators do not attempt to form a relationship with the child or young person and may rape them or commit other sexual acts without using the grooming process. They may, or may not, previously be known to the child or young person. The offences may involve the child or young person being abducted.
- 3.3 Some possible other routes into sexual abuse and exploitation are:
- **Previous Abuse** - Particularly sexual abuse, but any form of abuse which makes a child more vulnerable e.g. physical abuse and neglect, can be a major factor in a young person becoming involved in sexual exploitation
 - **Survival** - Exchanging sex to survive due to homelessness, threats of violence, etc;
 - **Online** – Children and young people are increasingly being targeted on the internet and social media platforms.
 - **Drugs** - To support substance misuse. The direct exchange of sex for drugs or cash;
 - **Homophobia** - There are very few safe places for young people to explore their sexuality. **Association** - Contact with other young people who are being sexually exploited or living in **residential** care that is being ‘targeted’ by perpetrators;
 - **Opportunistic** -Being approached in public toilets, parks, amusement arcades.
- 3.4 The perpetrator may recruit young people into the role of procuring other young people for sexual abuse and exploitation.

4. Trafficking and CSE

- 4.1 There are two different types of trafficking of children and young people for the purposes of sexual abuse and exploitation.
- Trafficking from abroad into the United Kingdom and

- Internal trafficking, where children and young people are moved from one place to another in the UK for the purposes of sexual exploitation. This may be from one street to a neighbouring street, from one area of a town or city to another area, or across county borders. It is not the distance that is relevant in the definition of internal trafficking, but the movement of a child or young person for the purpose of sexual exploitation.
- Further information on modern slavery and human trafficking can be found on the [National Crime Agency website](#)⁸ including information about the [National Referral Mechanism](#)⁹

4.2 Children and young people involved in any form of sexual exploitation should be treated primarily as the victims of abuse and their needs carefully assessed; the aim should be to protect them from further harm and they should not be treated as criminals. The primary law enforcement response should be directed at perpetrators of abuse.

5. Key Principles of Working Together

5.1. The government guidance requires agencies to work together to:

- Develop local prevention strategies;
- Identify those at risk of sexual abuse and exploitation;
- Take action to safeguard and promote the welfare of particular children and young people who may be sexually abused and exploited
- Take action against those intent on abusing and exploiting children and young people.

5.2. In doing so, the key principles should be:

- A **child-centred approach** which is focused on the child's needs, including consideration of children with particular needs or sensitivities, and the fact that

⁸ <http://www.nationalcrimeagency.gov.uk/crime-threats/human-trafficking>

⁹ <http://www.nationalcrimeagency.gov.uk/about-us/what-we-do/specialist-capabilities/uk-human-trafficking-centre/national-referral-mechanism>

children do not always acknowledge what may be an exploitative or abusive situation;

- A **proactive approach** which is focused on prevention, early identification and intervention as well as disrupting activity and prosecuting perpetrators;
- **Parenting, family life, and services** that take account of family circumstances in deciding how best to safeguard and promote the welfare of children and young people;
- The **rights of children and young people** to be safeguarded from sexual abuse and exploitation just as agencies have duties in respect of safeguarding and promoting welfare;
- **Responsibility for criminal acts.** Sexual exploitation of children and young people should not be regarded as criminal behaviour on the part of the child or young person, but as child sexual abuse. The responsibility for the sexual abuse and exploitation of children lies with the abuser and the focus of police investigations should be on those who coerce, exploit and abuse children and young people;
- **An integrated approach** as detailed within the Working Together to Safeguard Children (2015) sets out a tiered approach to safeguarding: universal, targeted and responsive. Within this, sexual abuse and exploitation requires a three-pronged approach tackling prevention, protection and prosecution;
- **A shared responsibility** of effective joint working between different agencies and professionals underpinned by a strong commitment from managers whom understand the problem of sexual abuse and exploitation. With the support of effective coordination of joint work by the Local Safeguarding Children Partnership.

6. Understanding worrying sexual behaviour

- 6.1 The Brook Sexual Behaviours Traffic Light Tool supports professionals working with children and young people to identify, assess and respond appropriately to sexual behaviours.
- 6.2 It uses a 'traffic light' system of green, amber and red to categorize sexual behaviours, increase understanding of healthy sexual development and to distinguish this from harmful behaviour.

- 6.3 The tool is available online at www.brook.org.uk/trafficlightrights and is accompanied by guidance and example scenarios.

7. Assessing Risk

7.1 The Child Criminal Exploitation Screening Tool

- 7.2 The CCE screening tool (page 13) is to assist practitioners in determining the level of their concern about sexual abuse and exploitation by consideration of the **behaviours** that have been expressed, observed, heard or identified with regard to the child.
- 7.3 Once the **behaviours** have been identified this will enable the practitioner to make a judgement as to whether to initiate further action or to monitor and reassess at an appropriate point, for example if the child's behaviour changes or new information is known.
- 7.4 The child and/or young person does not need to exhibit every behaviour listed in the tool. The tool is designed as a guide to inform a practitioner's judgement. It can also be used to measure progress for an individual victim in achieving a positive change in their vulnerabilities and behaviours.
- 7.5 The types of sexual abuse and criminal exploitation are constantly evolving, as are the control methods and grooming techniques of perpetrators therefore please note that the list provided within this toolkit is not exhaustive and the indicators are simply those most commonly recognised to indicate a risk of sexual abuse or exploitation.

When using the tool there are some important points to remember when considering the risk of CCE these are:

- Both girls and boys can be victims of child sexual abuse and exploitation and can be equally vulnerable
- Coercers and perpetrators are usually adult, but can be children and young people in a position of power of either gender
- Young people may exchange or sell sex as a result of constrained choices such as poverty, isolation and historic abuse/neglect
- Parents/carers may be involved in the sexual abuse/exploitation of their children, or fail to prevent/ protect from it

- Groups of children and young people, and multiple perpetrators may be involved (organised abuse)
- The earlier the intervention the better the chances of success.

7.6 Next Steps

7.7 On completion of the screening tool practitioners should make an initial judgement about the level of concern about Child Sexual Abuse/Criminal Exploitation for the child/young person. This should then be discussed with the relevant Manager or Child Protection lead and appropriate action to manage the risks should then be taken.

7.8 At any stage there should be a consideration as to the effectiveness of any current interventions with the child/young person and their family (assessed via CAF, FEHA etc) to:

- Prevent the young person from going missing
- Protect the young person from being exposed to any further risk
- Prevent sexual abuse/exploitation
- Change risk taking behaviour.

7.9 Below is a guide to potential levels of risk. Practitioners should also refer to the CYSCP Threshold Guidance¹⁰

Level of Risk	Description of Risk Level	Potential actions and/or considerations to discuss with Designated Child Protection Office Manager
No risk	Whilst there may be concerns for the welfare of the child/young person, which may involve the requirement of service provision, for other	

¹⁰

<http://www.saferchildrenyork.org.uk/2014%20YorOK%20Website/workforce2014/Concerned%20about%20a%20child/thresholds.htm>

	assessed risks, there is no current evidence that there is a risk of the child/young person being at risk of, or is experiencing sexual abuse/exploitation.	
Emerging Concerns	Some evidence that the child/young person is at risk of sexual exploitation, and/or places him/herself at risk. Some concerns that the child/young person is at risk of being targeted or groomed, but there are positive protective factors in the child/young person life.	<p>Consider flagging concern with City of York Local Area Team duty worker</p> <p>Ensure information is recorded on own agency IT system, flagged at appropriate CSE risk level.</p> <p>Consider CAF/ FEHA</p> <p>Consider completing North Yorkshire Police Information Form and sending to Police Central Referral Unit</p>
Escalating Concerns	Child is vulnerable to being sexually exploited/but there are not immediate/urgent safeguarding concerns. There is evidence the child/young person may be at risk of opportunistic abuse, or being targeted/groomed. The child/young person may experience protective factors, but circumstances and/or behaviours place him/her at risk of sexual exploitation.	<p><i>If a child or young person is at immediate risk of sexual exploitation or a crime is about to be committed – contact the police on 999 and CSC.</i></p> <p><i>Consider CAF/FEHA</i></p> <p>Consider whether the concerns meet the threshold for a referral into Children’s Social Care Referral and Assessment Service (with consent)</p> <p>Consider completing North Yorkshire Police Information Form and sending to Police Central Referral Unit</p> <p>Where there is a service specific assessment such as ASSET in place this should be updated and the additional information used to inform pre-sentence reports.</p> <p>Ensure risk information is recorded for the child/young person on each agency IT system.</p>

<p>Significant Concerns</p>	<p>Evidence/disclosure suggests the child is at immediate and/or continuing risk of sexual exploitation. The child/young person is engaged in high risk situations/relationships/risk taking behaviour.</p> <p>Evidence/assessment, suggests that the child is experiencing exploitation, (they may not recognise this).</p>	<p><i>If a child or young person is at immediate risk of sexual exploitation or a crime is about to be committed – contact the police on 999</i></p> <p>Make a safeguarding referral into Children’s Social Care Referral and Assessment Service</p> <p>Consider immediate disruption tactics.</p> <p>Where there is a service specific assessment such as ASSET in place, this should be updated and the additional information used to inform pre-sentence reports.</p> <p>Ensure information is recorded.</p>
------------------------------------	--	--

The City of York Safeguarding Children Partnership Child Criminal Exploitation (CE) (including Sexual Exploitation) Screening Tool

This is a *screening tool* to be used as *an aid* by practitioners to help them consider the level of risk a child or young person might be at, through thinking about their individual needs via their behaviour and known information. **IT IS NOT A FULL ASSESSMENT OF RISK** which would be carried out by Children’s Social Care but it can help inform an enquiry to the Children’s Front Door and any subsequent assessment. (To be used in conjunction with the full [guidance](#))

EMERGING CONCERNS		
Examples of behaviour (examples given are as a guide only)	Yes/No <small>(this could be some or all)</small>	Potential actions and/or considerations to discuss with Designated Child Protection Lead
Regularly coming home late or going missing	Choose an item.	Consider flagging concern with City of York Local Area Teams Tel. 01904 551900
Recent change in peer group / Reduced contact with family/friends / Late night phone/internet contact	Choose an item.	
Posting – or posted - sexualised images or content on the internet	Choose an item.	
Unaccounted for monies or goods e.g. mobile phone and/or credit/ debts	Choose an item.	Ensure information is recorded on own agency IT system, flagged at appropriate CSE risk level.
Associating with unknown adults, older peers or other young people at risk of criminal exploitation or already criminally exploited	Choose an item.	
Reduced contact with family/friends	Choose an item.	Consider CAF/ FEHA

Experimenting with drugs/alcohol	Choose an item.	<p>Consider completing North Yorkshire Police 'Partner Information Sharing Form' https://www.saferchildrenyork.org.uk/concerned-about-a-child-or-young-person.htm and sending to Police Central Referral Unit</p> <p>NOTES:</p>
Poor self image, eating disorder, some superficial self-harm	Choose an item.	
Physical injuries that cannot be explained sufficiently	Choose an item.	
Initial offending often in group situations	Choose an item.	
Mainly engaged in education, employment or training/ Some attendance/behaviour issues/ Poor educational achievement	Choose an item.	

ESCALATING CONCERNS/HARM

Examples of behaviour (examples given are as a guide only)	Yes/No <small>(this could be some or all)</small>	Potential actions and/or considerations to discuss with Designated Child Protection Lead
Associating with unknown adults and/or other sexually exploited or missing children/young people. Spending time in areas where known CE and/or getting into cars with unknown adults or suspected perpetrators of CE/CSE	Choose an item.	<p><i>If a child or young person is at immediate risk of exploitation or a crime is about to be committed – contact the police on 999 and CSC.</i></p> <p><i>Consider CAF/ FEHA</i></p> <p>Consider whether the concerns meet the threshold for a referral into Children’s Social Care Referral and Assessment Service Tel. 01904 551900</p> <p>Consider completing North Yorkshire Police ‘Partner Information Sharing Form’</p>
Being groomed on internet. New or expensive possessions which cannot be accounted for. Access to cash/money; spending time in areas where drug activity known to take place or fearful of going to certain areas.	Choose an item.	
‘Clipping’ i.e., offering to have sex with the intention of robbing the victim, then running before sexual activity	Choose an item.	
Disclosure of physical assault with no substantiating evidence followed by withdrawal of complaint	Choose an item.	
Reports of potential involvement in CE, such as seen in hot spots, known houses or recruiting grounds	Choose an item.	
Has a significantly older boyfriend/girlfriend	Choose an item.	
Regular use of or recent increase in use of substances /Use of drugs in addition to alcohol/cannabis (e.g. MDMA, cocaine) / Concerns for drug dependency /	Choose an item.	

Associating with known drug dealers / Seen in known areas for selling drugs/ Seen associating with young people who are running and involved in drug lines		https://www.saferchildrenyork.org.uk/concerned-about-a-child-or-young-person.htm and sending to Police Central Referral Unit Where there is a service specific assessment such as ASSET in place this should be updated and the additional information used to inform pre-sentence reports. Ensure risk information is recorded for the child/young person on each agency IT system. NOTES:
Significant debts/ scared of members of the community.	Choose an item.	
Sexually transmitted infections	Choose an item.	
Regular self-harming requiring medical assistance	Choose an item.	
Repeat offending / Staying out overnight with no explanation	Choose an item.	
Gang association or membership	Choose an item.	
Evidence of sending or receiving sexualised images of themselves or others	Choose an item.	
Irregular or poor school attendance /Truancing / Losing interest in education/ Periods of exclusion/ Whereabouts during school hours unknown/ Poor educational achievement	Choose an item.	

SIGNIFICANT CONCERNS/HARM

Examples of behaviour (examples given are as a guide only)	Yes/No <small>(this could be some or all)</small>	Potential actions and/or considerations to discuss with Designated Child Protection Lead
Under 13 or young person with a learning disability of special needs (up to age 21) engaging in sexual activity/ Repeated pregnancy/miscarriages and/or terminations / Inappropriate/exploitative sexual activity with peers/adults / Disclosure of sexual activity with boyfriend/girlfriend's peers/ Others having knowledge that sex can be exchanged for money and/or goods / Relationship with suspected/known CSE perpetrators	Choose an item.	<i>If a child or young person is at immediate risk of sexual exploitation or a crime is about to be committed – contact the police on 999</i>
Not in any education, training or employment/Regular breakdown of school placements due to behavioural problems/ Whereabouts during school hours unknown and information suggesting links to CSE/County Lines or member of a gang	Choose an item.	Make a safeguarding referral into Children's Social Care Referral and Assessment Service https://www.saferchildrenyork.org.uk/concerned-about-a-child-or-young-person.htm Tel. 01904 551900)
Identifying as a county lines or gang member / Found in areas/properties known for CSE/street sex work/drug activity/ Evidence or police Intelligence to suggest being moved around for sexual activity / Abducted and forced imprisonment (described by young person as "locked in")	Choose an item.	Consider immediate disruption tactics.
Evidence of dependency on alcohol/drugs, Using opiates (e.g. heroin, codeine, methadone) / Injecting of any substance / Dealing of substances / Found in areas/properties known for drug activity/ Supply of substances to others / CSE activity for paying off of debts e.g. drug debt/ known to be actively involved in networks that run drug lines	Choose an item.	Where there is a service specific assessment such as ASSET in place, this should be updated and the additional information used to inform pre-sentence reports.

SIGNIFICANT CONCERNS/HARM

Examples of behaviour (examples given are as a guide only)	Yes/No <small>(this could be some or all)</small>	Potential actions and/or considerations to discuss with Designated Child Protection Lead
Being taken to clubs/hotels for sexual activity with adults or as part of a peer on peer exploitative relationship	Choose an item.	<p>Ensure information is recorded.</p> <p>NOTES:</p>
Disclosure of sexual assault and then withdrawal of disclosure/statement/ visible injuries	Choose an item.	
Abduction and forced imprisonment	Choose an item.	
Use of internet to regularly meet in person unknown adults/peers for sexual activity / Evidence of sexual bullying through social media/internet / Evidence of sexual material being shared online without young person's consent	Choose an item.	
Being bought/sold/trafficked. Homeless or sofa surfing / often stays elsewhere. Lack of relationship/understanding or trust. Family/friends/peers are known or suspected perpetrators of CSE/ Known, parent is unavailable physically or emotionally	Choose an item.	
Significant intelligence indications. Charged or convicted of robbery/use of offensive weapon/ possessions of large quantities of drugs. Known to be active with drug distribution networks and lines. Recruiting other to run	Choose an item.	

SIGNIFICANT CONCERNS/HARM

Examples of behaviour (examples given are as a guide only)	Yes/No <small>(this could be some or all)</small>	Potential actions and/or considerations to discuss with Designated Child Protection Lead
drug lines and to organised crime. Withdrawing witness statements and suspected intimidation		
Repeated pregnancy/miscarriages and/or terminations / inappropriate/exploitative sexual activity with peers/adults. Disclosure of sexual activity with boyfriend/girlfriend's peers. Others having knowledge that sex can be exchanged for money and/or goods. Relationship with suspected/known CSE perpetrators	Choose an item.	
Chronic low self-esteem. Changes or extremes in mental health / suicidal ideation . Evidence of emotional abuse from domestic violence, as witness or victim. Evidence of self-harm, eating disorders, previous suicide attempts or overdoses. Frequent attendance at A&E.	Choose an item.	
Physical symptoms suggestive of sexual assault	Choose an item.	

NOTES:

8. Information Sharing

8.1 Guidance on information sharing is available here <http://www.york.org.uk/workforce2014/Concerned%20about%20a%20child/information-sharing.htm>

8.2 Completing the Police Information Form

8.3 It is legitimate for agencies to provide information to the police where there is good reason to believe that a child might be at risk of CSE in order to assist the police in their investigations. However, each case has to be considered on its own facts and there must be a clear decision making process that is clearly recorded on the file.

8.4 Statutory guidance on sexual exploitation states that:

- The investigation of child sexual exploitation requires a proactive approach to explore the nature and patterns of sexual exploitation locally, and to share information with partner agencies about those at risk and potential perpetrators. Linking this work to the response to missing young people and other public protection issues can help to identify and manage risk at an early stage.
- It is important that the police work closely with partner agencies to develop a coordinated response to any concerns about child sexual exploitation, and to ensure that the response is in the best interests of the child whose welfare and safety should be paramount.
- Similarly partner agencies need to involve the police as early as possible to ensure that no information is lost that may be critical to a prosecution case, and so that a disruption plan can be put in place for the perpetrator. It is also vital that information is collated that may be vital to a prosecution even in cases where a young person has made no formal complaint. In many cases the processes of supporting a young person to recognise the exploitative nature of their relationship will be lengthy. By the time a formal disclosure is made vital information may have been lost unless there is a strategy of evidence gathering from the outset.
- The police service is the prime agency for gathering evidence in connection with criminal cases, and tackling perpetrators. However, in many cases of sexual exploitation this process will only be achieved by working closely with agencies in a

position to build a trusting relationship with the young victim. Partner agencies may not previously have been involved in the gathering of evidence and may need guidance and support from criminal justice agencies to understand the kind of information that can be useful, and the process for recording that information so that it can be used in evidence where necessary.

- It is important for the police to focus on the offender. Alongside forums for sharing information to protect the child or young person, it is useful to have information sharing forums which focus specifically on suspected perpetrators.
- The police need to be aware of the early indicators of risk of sexual exploitation and ensure that appropriate intervention is made at an early stage to build up a relationship with the young person and to begin to gather evidence. Other specialist agencies or educational establishments should be consulted at an early stage. Identifying risk factors and addressing them through early interventions demonstrates care for the young victim and builds trust to enable exploitation to be challenged and minimised.

8.5 Accordingly, there is a clear expectation that agencies will work with the police and will share information to assist the police to take a proactive approach to CSE. Although Children’s Social Care has a duty of confidentiality to children, information can be disclosed either in circumstances where the **child consents** or **where there is a public interest of sufficient force**. This must be judged on the facts of each case. There must be a clear record in the case notes of any discussion about consent to disclose.

8.6 There may be occasions where it is not appropriate to seek consent to disclose from the child, for example if doing so would:

- Place a person (the individual, family member, yourself or a third party) at increased risk of significant harm if a child, or serious harm if an adult; or
- **Prejudice the prevention, detection or prosecution of a serious crime**; or
- Lead to an unjustified delay in making enquiries about allegations of significant harm to a child, or serious harm to an adult.

8.7 If consent to disclose is sought from the child and the child declines to give consent, this does not necessarily preclude the sharing of confidential information, if to do so would be in the public interest. A public interest can arise in a wide range of circumstances,

for example, to protect children from significant harm, protect adults from serious harm, promote the welfare of children, or to **prevent crime and disorder**.

8.8 These decisions must be made by suitably qualified people such as named designated professionals or senior safeguarding managers.

8.9 Any decision whether or not to share information should be recorded on the case notes. The notes should show how the decision was reached and reflect a balancing exercise between the duty of confidentiality to the child and the wider public interest.

The key factors in deciding whether or not to share confidential information are necessity and proportionality, ie, whether the proposed sharing is likely to make an effective contribution to preventing the risk and whether the public interest in sharing information overrides the interest in maintaining confidentiality. In making the decision you must weigh up what might happen if the information is shared, against what might happen if it is not, and make a decision based on professional judgement.

9. Flagging a Concern with the Local Area Team (LAT)

9.1 Any practitioner can flag a concern or incident with the Local Area Team (LAT) by ringing 01904 551900, select Local Area Teams and speaking to duty worker

The concern must be:

A fact, concern or incident that the caller feels may need to be known by a future enquirer of that child or young person's record if they are intending to work with them

9.2 Flagging Process:

- Upon receipt of a call the LAT Duty Worker will flag under a fairly broad category. The caller is expected to store/retain the full story within their system. The LAT DO NOT RETAIN DETAILS OF THAT CONCERN.
- The LAT duty worker will check for flags whenever they receive an enquiry about a young person.
- If there is more than one flag the LAT will put the professionals in touch with each other
- The professionals will then share information in accordance with their own information sharing protocols.

10. Frequently Asked Question

10.1 Further Advice and Guidance

10.2 As a practitioner, if you are unsure and would like further advice or guidance, the first step is to approach your line manager or your designated child protection officer.

Alternatively you can contact either:

City of York Children’s Social Care,

Telephone: 01904 551900 or

Email: childrensfrontdoor@york.gov.uk

North Yorkshire Police

Telephone 101

10.3 What if the young person is apparently consenting to this exploitation?

10.4 The legal position is that any young person over the age of 16 can consent to sex with people their own age or older. However, it is vital to note that a person under 18 involved in an exploitative relationship cannot give consent to their own abuse even if they do not recognise it as such. This applies to “boyfriend” models equally as to the provision of sexual services in return for payment or promised payment.

10.5 Sexual activity for under 18s as part of a exploitative situation is child abuse and **cannot** be deemed a “lifestyle choice”, even if the victim does not see themselves as a victim. A child under the age of 13 is unable to consent to any sexual activity, irrespective of whether the child sees it as abusive or not.

10.6 I have just heard something in passing and am not sure if it is relevant?

10.7 If you have any concerns at all, use the risk assessment tool and follow the processes outlined.

10.8 What if I do not know all the information about a child?

10.9 The tool has been designed to identify risks across a child or young person’s behaviour. Complete the screening tool and follow the process of completing the North Yorkshire Police Information Form (appendix one) if appropriate and refer the child to Children’s Social Care if thresholds are met.

10.10 I am concerned that if I identify someone at risk they will not be happy with my actions and it may jeopardise my relationship and trust with them?

10.11 The screening tool has been designed so it can be shared with a child or young person to explain why their behaviour may have caused worry or concern to those around them. It will therefore prompt discussion and understanding that they are not being singled out and that individuals do care.

10.12 It is also your duty of care to share this information with the key agencies in order to protect the child or young person if the thresholds are met.

10.13 I am concerned that if I flag someone as being at risk of CSE that this will remain on their file:

10.14 A child or young person's situation should be reviewed at appropriate intervals to determine the appropriate level of intervention..

11. Useful Numbers, Websites, Resources

Useful Numbers	
Referral and Assessment Service (Children's Social Care)	01904 551900
Emergency Duty Team (out of office hours)	01609 780780
Police Central Referral Unit	intelligenceunit@northyorkshire.pnn.police.uk
North Yorkshire Police	Emergency 999, Non-Emergency 101
Child Sexual Abuse Assessment Centre	01904 721813
NSPCC Child Protection Helpline	0808 800 5000
Childline	0800 1111
Missing People Helpline	0808 800 7070

Rape and Abuse Line	0808 800 0123 (answered by women every evening)
IDAS Rape Support Helpline	0300 111 0777
NHS Direct Health Advice	111
Victim Support	0300 303 1971
Supporting Victims (support for anyone affected by a crime including children and young people)	01609 643 100
Time 2 (Targeted support to young people affected by CSE)	07495582675 Time2@basisyorkshire.org.uk
IDAS Domestic Abuse Support	03000 110 110
Drug and Alcohol Advisory Services (FRANK)	0800 776600
Useful Website	
Child Exploitation Online Protection (CEOP)	www.ceop.police.uk
City of York Safeguarding Children's Partnership	http://www.saferchildrenyork.org.uk/
Parents Against Child Sexual Exploitation (PACE)	http://www.paceuk.info
National Working Group (NWG)	http://www.nwgnetwork.org

APPENDIX ONE: NORTH YORKSHIRE POLICE INFORMATION SHARING FORM

North Yorkshire Police and Partnership Information Form

(This form is available as a separate document on the CYSCP website¹¹.)

Are you reporting events where a Person, Child or Young Person is at immediate risk of harm? Consider requesting an immediate police response by calling 999, or call 101 to obtain police assistance and advice if not an emergency, or you feel a crime is being or has been committed.

Does your information related to Child Sexual Exploitation?

If so, please also refer to the Joint LSCB Child Sexual Exploitation Practice Guidance.

Please provide as much detail as possible regarding names / nicknames / dates of birth / descriptions / vehicle details / addresses - which should include residence if known, location of incident, school / college / work place attended etc.

Please be assured the information you provide is strictly managed and your details will not be incorporated in any subsequent intelligence reports.

Have you made any other referrals or reports to any other agency regarding this or associated matters? (e.g NY Police; Children’s Social Care, Youth Justice Service, Health, Education)

If YES, please state which agency:

Your details			
Full Name and DOB:			
Job title:			
Organisation:			
Address:		Telephone / Email:	

Who or Where the information is coming from – if your own observations enter “as above”	
Full Name and DOB:	

¹¹ <http://www.saferchildrenyork.org.uk/concerned-about-a-child-or-young-person.htm>

Address:		Telephone No:	
	If the information is from a 3 rd party would they be willing to engage with the Police? Other Partner (please state)?		
How do they / you know this information and for how long			
How does this person know this information?			
Is this information second hand?			
When did they first know the information to be correct?			
Who else knows this information?			

Who is involved – (enter more as required)			
Full Name:		Alias/Nickname:	
Date of Birth:		Address:	
Gender:		Telephone #	
Description and Clothing:			
Full Name:		Alias/Nickname:	
Date of Birth:		Address:	
Gender:		Telephone #	
Description and Clothing:			
Full Name:		Alias/Nickname:	

Glossary of Terms

ASSET	Youth Justice Board Offending Assessment Tool
CAF	Common Assessment Framework
CEOP	Child Exploitation and Online Protection Centre
CIN	Child in Need
CP	Child Protection
Clipping	CYP targeting specific persons to rob by offering to have sex for monies then running when they receive payment before sexual activity takes place
Disruption	Tactics used to divert or stop perpetrators exploiting young people where there is little or no evidence to prosecute
CYSCP	City of York Safeguarding Children's Partnership
Gang	Organised groups with an element of status, membership and criminality or 2 or more young people involved in delinquent peer groups.
Groomed	A systematic process used to engage young people and coerce them to provide sexual favours. (See DCSF Guidance for definition)
Hot spot	Specific areas, streets or houses used to target young people
Information Report Form	Template for sharing information about risks to CYP which will inform multiagency responses and intelligence gathering / Police Problem Profiling
Perpetrator	Any person who poses a risk or commits crimes against a young person
Risk Indicator	Common or known signs of child sexual exploitation
Sexting	Sharing sexualised photos and language/photographs
Soliciting	Legal term for exchanging and selling sexual favours (prostitution)

S47	Section 47 of the Children Act 1989 (indicative of concerns about significant harm)
STI	Sexually Transmitted Infections
TAC	Team around the Child
TAF	Team around the Family

INTENTIONALLY BLANK