

Makaton Symbols and Line Drawings of Signs

Christmas

We are pleased to be able to provide you with a selection of vocabulary based around Christmas.

There are symbols and signs you might need for Christmas published in these Makaton Vocabulary books:

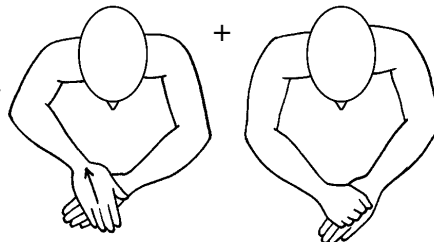
- **Core Vocabulary:** snow, snowman, cold, star, stars, to sing, cow, sheep, red, king, party
- **Animals, Transport and Vehicles:** reindeer, camel, donkey, stable, sleigh
- **National Curriculum:** candle, winter
- **Food and Drink:** cake, turkey
- **PSHE:** clothing, family

Christmas



Christmas

Slide right hand over back of left hand towards body, then close right hand and place on back of left hand



MAKATON[®]

The Makaton Charity, Manor House, 46 London Road, Blackwater, Camberley, Surrey GU17 0AA
Email: info@makaton.org Tel: 01276 606760 Fax: 01276 36725 Web: www.makaton.org

Makaton Symbols and Line Drawings of Signs

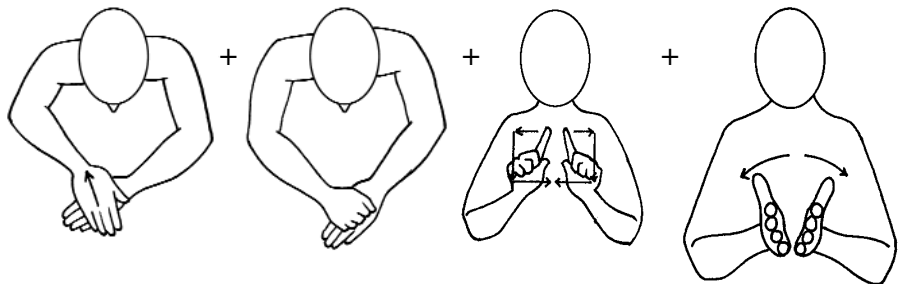
Christmas

Christmas Card



Christmas Card

Slide right hand over back of left hand towards body, then close right hand and place on back of left hand

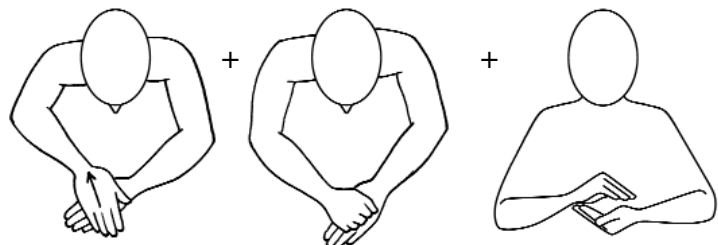


Christmas Pudding
(Food and Drink)



Christmas Pudding
(Food and Drink)

Slide right hand over back of left hand towards body, then close right hand and place on back of left hand



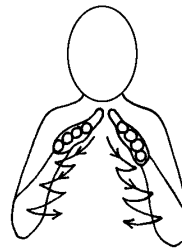
Makaton Symbols and Line Drawings of Signs

Christmas

Christmas Tree



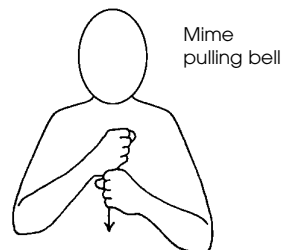
Christmas Tree



Church



Church



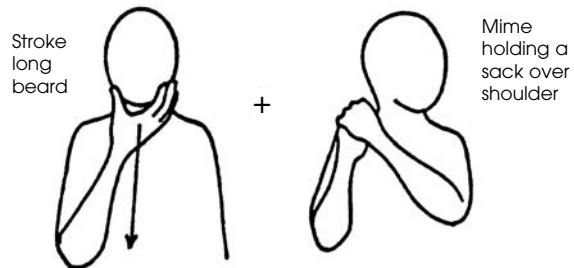
Makaton Symbols and Line Drawings of Signs

Christmas

Father Christmas



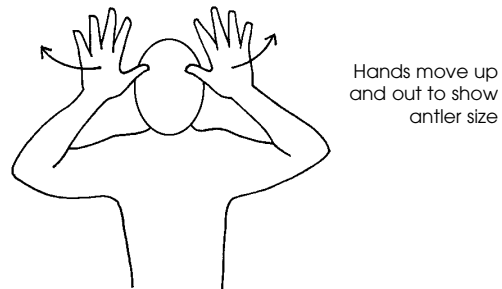
Father Christmas



Reindeer
(Animals, Transport and Vehicles)



Reindeer
(Animals, Transport and Vehicles)



Makaton Symbols and Line Drawings of Signs

Christmas

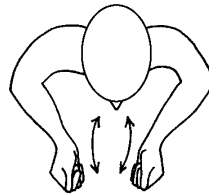
Sleigh

(Animals, Transport and Vehicles)



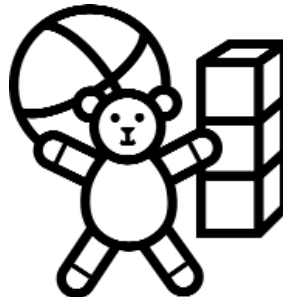
Sleigh

(Animals, Transport and Vehicles)



Hands move quickly backwards and forwards together by wrist movement

Toys



Toys



Whole formation circles twice

Makaton Symbols and Line Drawings of Signs

Christmas

There are more Makaton Christmas resources available:

● Makaton Christmas Carols Book 1	SOC07010	£15.80
● Makaton Christmas Carols Book 2	SOC07020	£23.75
● Makaton Christmas Carols Pack	SOC10060	£36.00

For more information or to order online visit www.makaton.org or 01276 606789.

You can also download The First Christmas Story **free** from www.makaton.org

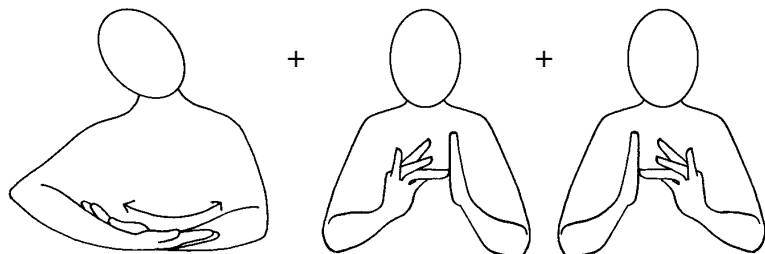
This Makaton symbol version of The First Christmas Story is designed for Key Stage 1 pupils and others to make their own books by adding drawings and pictures. Here are some signs to accompany this **free** resource:

Angel



Blades of hands tap chest twice. Wrists remain in contact throughout

Baby Jesus



MAKATON[®]

The Makaton Charity, Manor House, 46 London Road, Blackwater, Camberley, Surrey GU17 0AA
Email: info@makaton.org Tel: 01276 606760 Fax: 01276 36725 Web: www.makaton.org

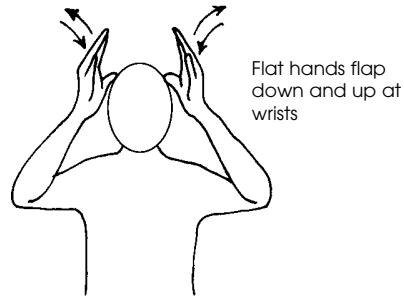
© The Makaton Charity 2009

Makaton Symbols and Line Drawings of Signs

Christmas

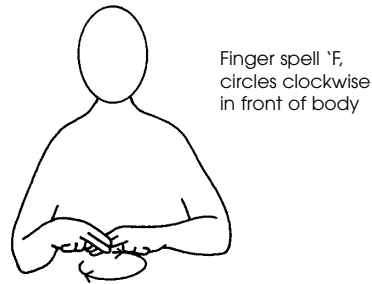
Donkey

(Animals, Transport and Vehicles)

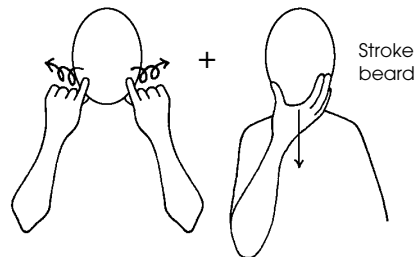


Family

(PSHE)

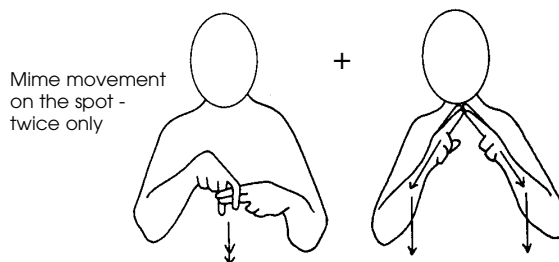


Shepherd (1)



Stable

(Animals, Transport and Vehicles)



Other related Makaton resources available:

- **The Christmas Story** - Symbols Making Sense.
(For children to read for themselves, available in small or larger A3 size).
Available from SMS Books. Tel: 01590 682933 www.just-special-marketing.co.uk
- **Participation in Christian worship**
Contact: Causeway Prospects, 69 Honey End Lane, Reading RG30 4EL.
www.prospects.org.uk email: causeway@prospects.org.uk Tel: 0118 951 6980

MAKATON[®]

The Makaton Charity, Manor House, 46 London Road, Blackwater, Camberley, Surrey GU17 0AA
Email: info@makaton.org Tel: 01276 606760 Fax: 01276 36725 Web: www.makaton.org

© The Makaton Charity 2009